

BUILT ON A ROCK

What kind of a church are you singing in right now? Is it a modern brick building with lots of glass and greenery? Is it a Gothic design with a tall pointed ceiling? Or is it a simple frame structure?

Built On A Rock tells us that God's real dwelling place is within the hearts of those who love Him. Long after all earthly spires and steeples fall into crumbled ruins, the Church will live on through God's Spirit in people — no matter where they gather in His Name!

Look up the meaning of the word "covenant" from the 4th stanza. God made a special agreement with the Hebrew people that if they would love Him, serve Him, and live by His laws, He would make of them a great nation. What were the laws called that God gave them to live by, as found in the Old Testament?

Select one of the laws in Exodus 20 and tell why it is still important today:



People in New Testament times were taught by Jesus that we must not only keep the old laws but we must keep them by putting another law first. Read Matthew 22:35-40 to see what this new law is, then write it here:

Listen to the *Kirken* tune. Is it major or minor? _____

Raise the 4th note of the melody a half step. What do you discover when you sing it? _____

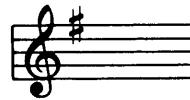
Do you like the hymn in major or minor better? _____

What other hymns do you know that are written in minor keys? _____

Each major key signature has a minor key related to it whose tonic is a minor third lower than "do" of the key:



is C Major or A Minor



is G Major or E Minor



is _____ or _____



is _____ or _____

Everytime the church bell rings, remember that you and I are the ones through whom God's Spirit makes the Church alive!